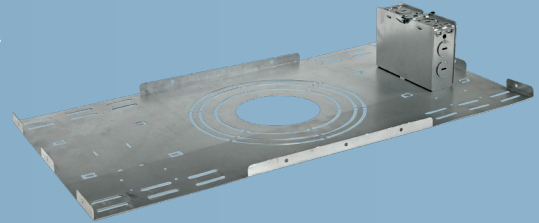


Catalog Number : Project Name : Note : Date : Type :

DESCRIPTION

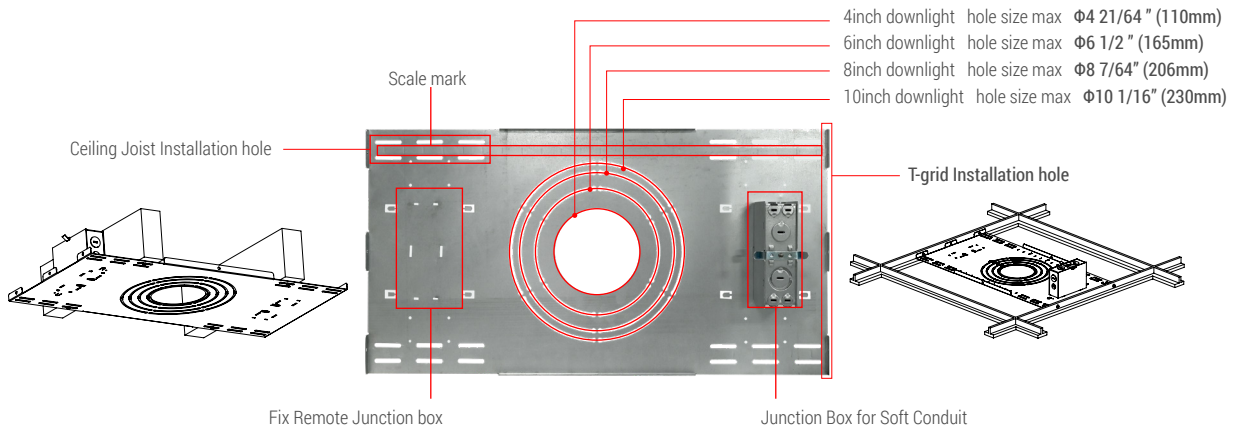
New Construction Plate for Commercial Downlight is made of galvanized iron. Compatible with 4 types of hole size, up to 10 inch downlight can be installed. Works for both new construction joist and T-Grid applications.



Basic parameter

Product name	New Construction Plate for Commercial Downlight	Dimension	23.7"*12.3"*0.6"/ 603*312.7*14.2mm
Installation method	Recessed	Package size	24.4"*11.4"*13"/ 620*290*330mm(6PCS)
Suitable for light type	4/6/8/10 inch downlight	Material	Galvanized iron
Hole size	Φ4 21/64" Φ6 1/2" Φ8 7/64" Φ9 1/16"	N.W.	1265g ± 50g

Diagrammatic sketch



Dimension

