

■ Photoelectric Switch ANT-5-4T-PC Instruction



INTRODUCTION

The photoelectric switch ANT-5-4T-PC is applicable to control the street lighting, passage lighting and doorway lighting automatically in accordance with the ambient lighting level. This product is designed with electronic circuits. Its quicker response with time delay of 5 seconds offers easy-to-test feature. Especially, model ANT-5-4T-PC provides a wide voltage range for customer applications under almost power supplies.

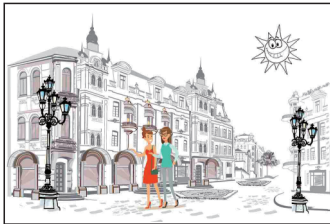
Further, a preset 5 seconds time-delay might avoid mis-operation due to spotlight or lightning during the night time.

This product has been listed by UL Inc and is comply with the Standard for Non-industrial Photoelectric Switches for Lighting Control UL773A.

SPECIFICATIONS

Rated Voltage	12-24VDC, >20mA
Max. current sink	25mA
Power consumption	Max.0.4W
Operate Level	10~20Lx On /30-80Lx Off
Humidity	99%RH
Temperature	-40°F ~ +158°F (-40°C ~ +70°C)

PHOTOCELL FUNCTION



With sufficient natural light, the light does not switch on whether presence is detected



With insufficient natural light, the sensor switches on the light automatically

DIMENSIONS

