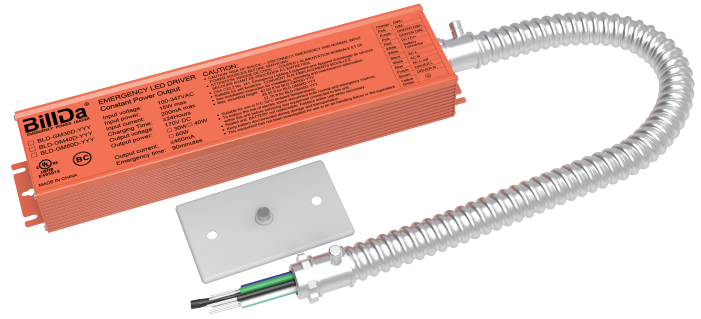


# EMERGENCY LED DRIVER BLD-GMXXD-YYY

## Features

- UL listed for factory and field installation
- Universal input 100-347Vac
- Built-in Lithium Battery
- Battery protections: over voltage, low voltage, over temperature, short circuit protection
- The batteries Meet 500 cycles of standard CH and standard DCH
- Constant Power Output
- Easy wiring: directly connect to AC Input of LED Driver



## Specifications

Model No.	BLD-GM30D-YYY	BLD-GM40D-YYY	BLD-GM60D-YYY
Input Voltage	100-347V AC, 50/60Hz	100-347V AC, 50/60Hz	100-347V AC, 50/60Hz
Input Current	200mA max	200mA max	200mA max
Input Power	15W max.	15W max.	15W max.
Output Voltage	170V DC	170V DC	170V DC
Output Power	30W	40W	60W
Battery Type	Lithium ion	Lithium ion	Lithium ion
Recharge Time	≥24 hours	≥24 hours	≥24 hours
Discharge Time	≥90 minutes	≥90 minutes	≥90 minutes
Ambient Temp.	5°C to +50°C (41°F to 122°F)	5°C to +50°C (41°F to 122°F)	5°C to +50°C (41°F to 122°F)
Applications	0-10V dim fixtures ≤150W non 0-10V dim fixtures <30W	0-10V dim fixtures ≤300W non 0-10V dim fixtures <40W	0-10V dim fixtures ≤300W non 0-10V dim fixtures <60W

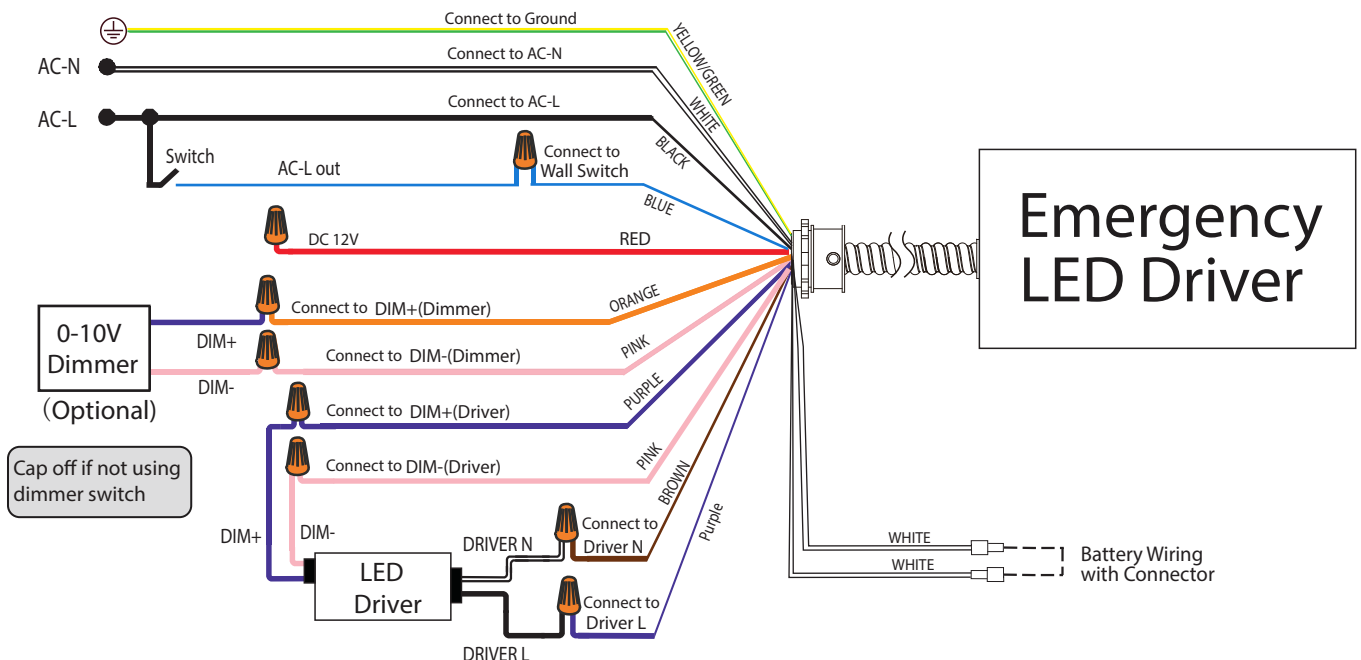
Important: verify compatibility before installation.

## Wiring Diagram

### 1. For 0-10V dimmable LED driver with input power higher than emergency output power

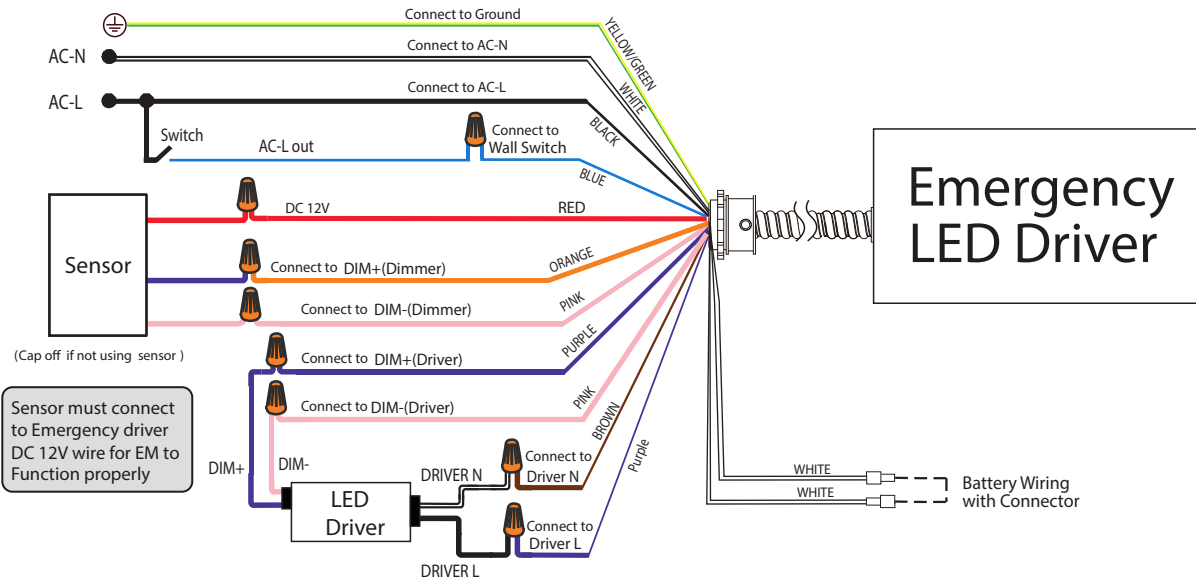
Emergency Driver Dim+ (Purple), Driver Dim- (Pink) has to connect with LED driver DIM+ and DIM-

#### ① With dimmer switch

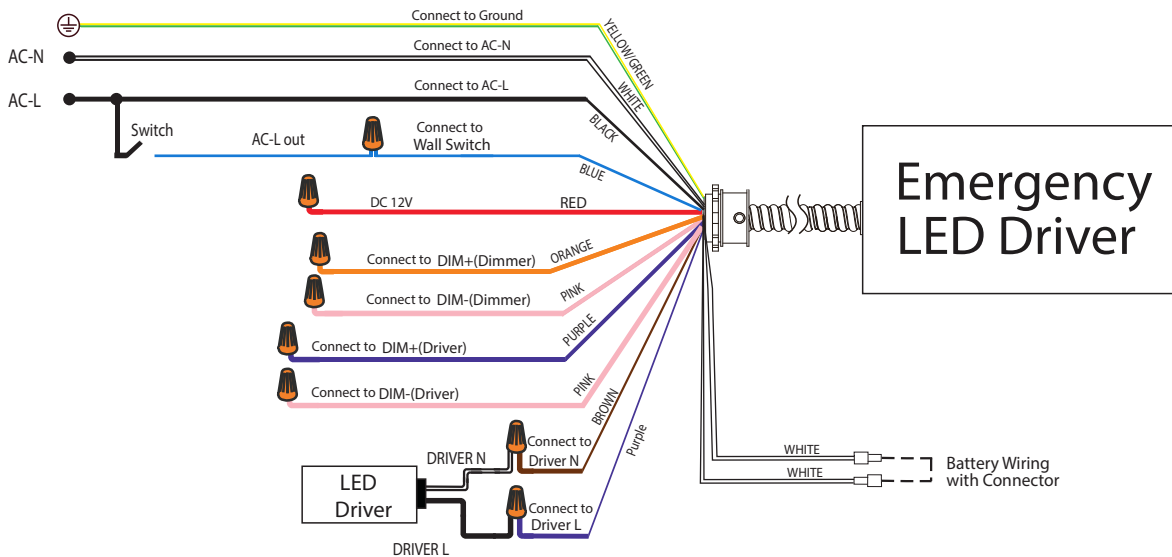


**2. For 0-10V dimmable LED driver with input power higher than emergency output power**  
 Emergency Driver Dim+ (Purple) , Driver Dim- (Pink) has to connect with LED driver DIM+ and DIM-

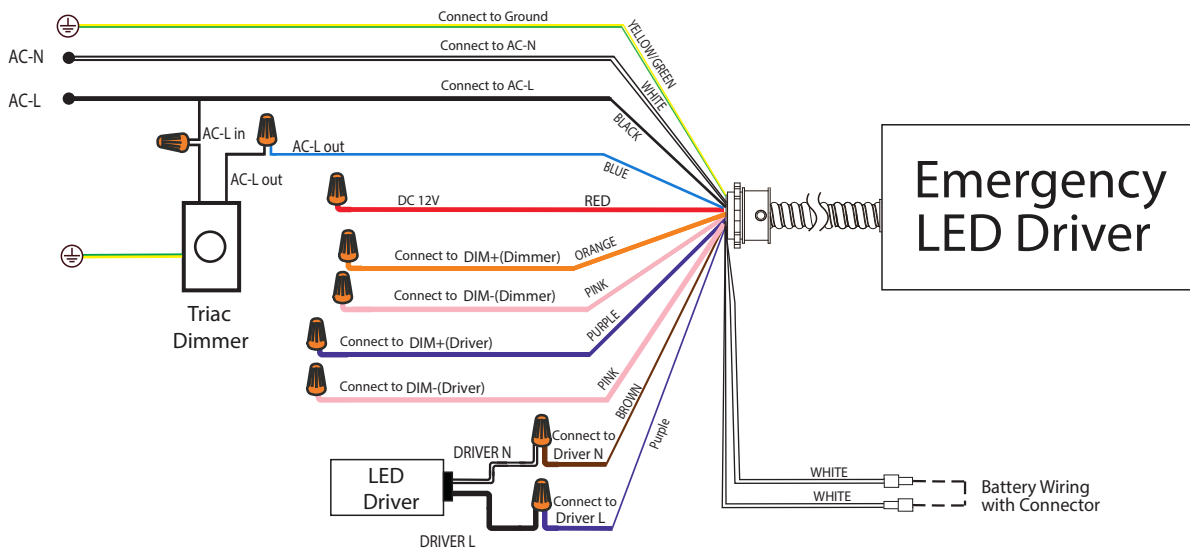
**2 With sensor**



**3. For non dimmable LED driver with input power less than emergency output power**



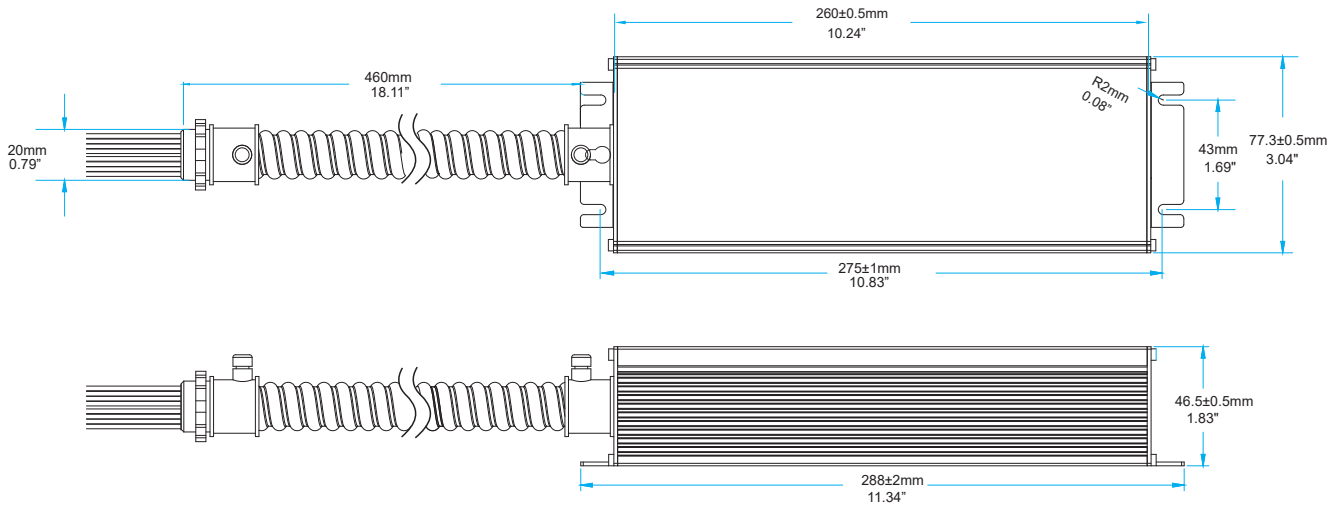
**4. For triac dimmable LED driver with input power less than emergency output power**



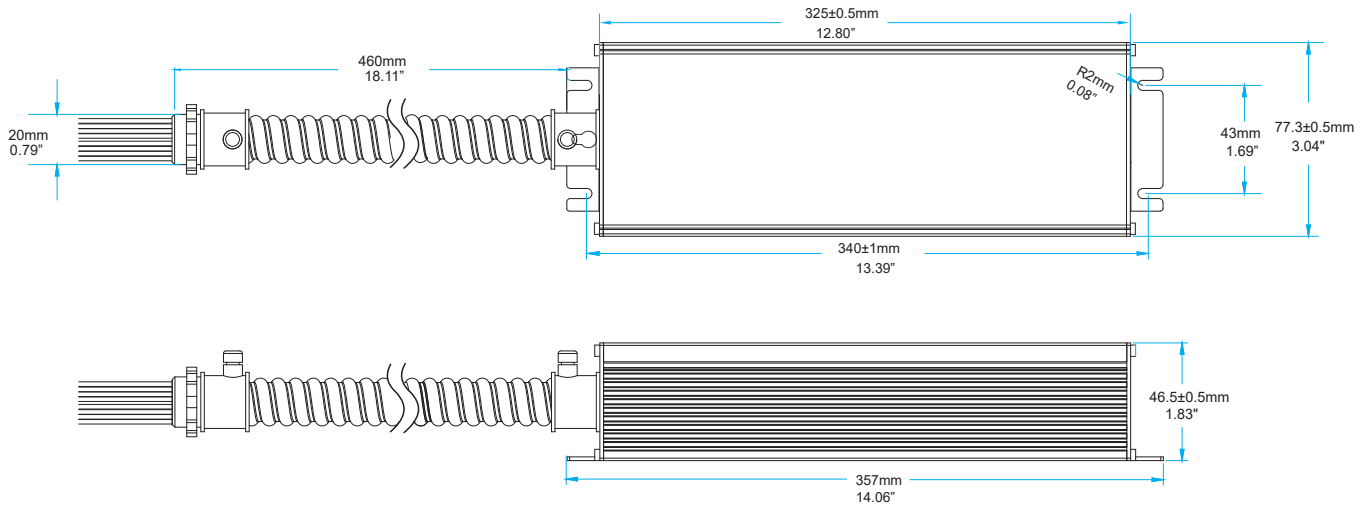
Note: verify compatibility before installation

## Dimensions

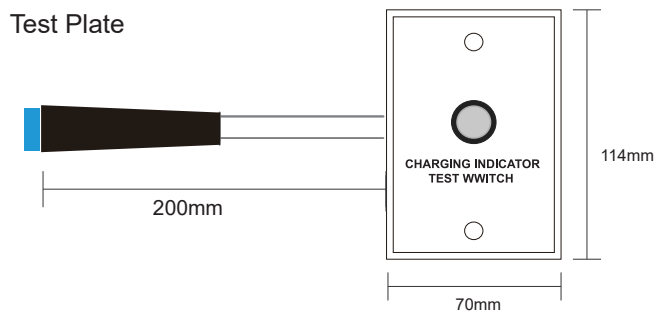
30W/40W : L\*W\*H=288x77.3x46.5mm ( 11.34"x3.04"x1.83"), mounting center 271.5mm(10.83")



60W : L\*W\*H=357x77.3x46.5mm ( 14.06"x3.04"x1.83"), mounting center 340mm(13.39")



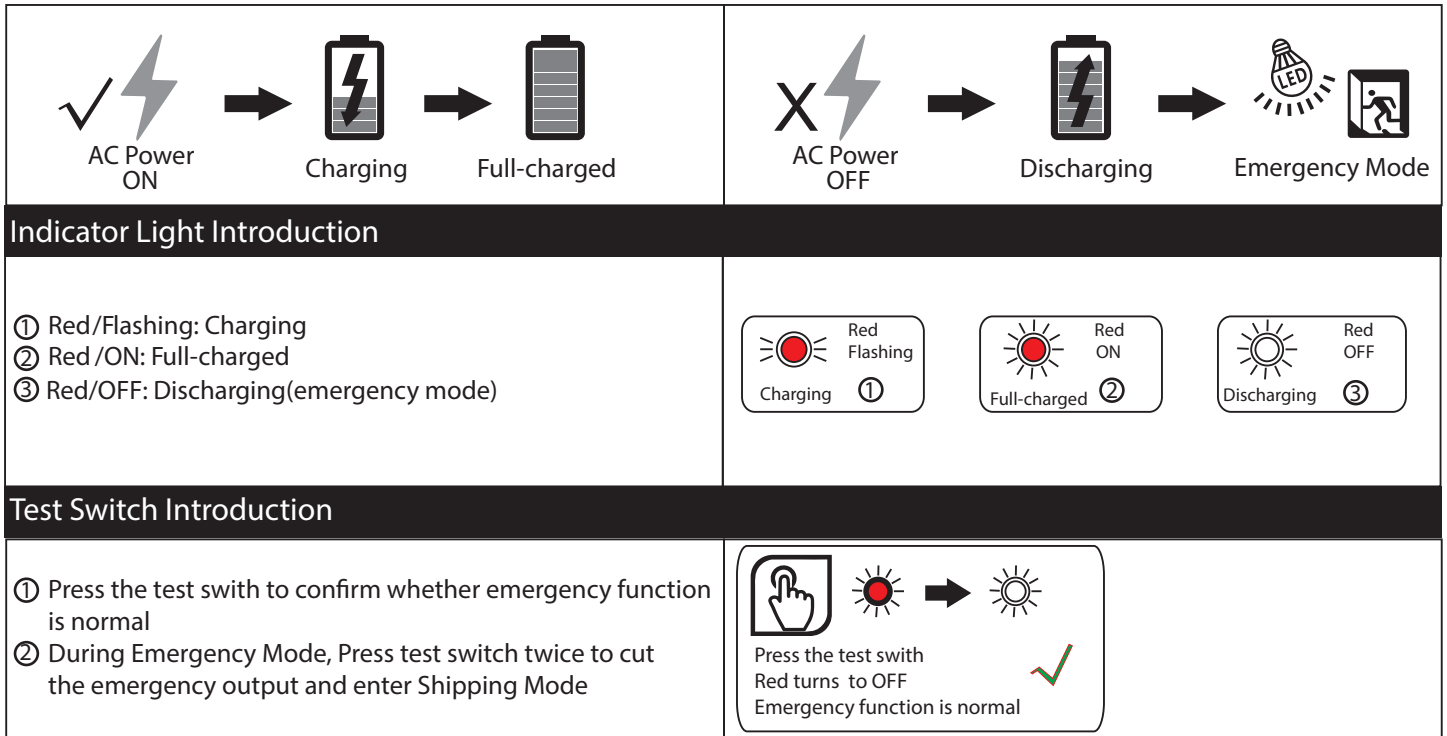
### ACCESSORY:



## Operation

**Normal Mode:** AC power is present. The AC driver operates the LED load as designed. The emergency driver is charging in a standby mode. The charging indicator will be lit, showing that the battery is charging.

**Emergency Mode:** When the AC power goes out, the emergency driver detects the AC power outage and automatically switch to emergency mode. The LED luminaire is illuminated for a minimum of 90 minutes. When the AC power is restored, the emergency driver switches the system back to the Normal Mode and resumes battery charging.



## IMPORTANT SAFEGUARDS

When using electrical equipment, basic safety precautions should always be followed, including the following:

### READ AND FOLLOW ALL SAFETY INSTRUCTIONS

**CAUTION: RISK OF SHOCK**-disconnect emergency and normal input power sources before servicing

**ASSEMBLY and FIELD INSTALLATION WIRING: WARNING:** AC power must be off before proceeding with assembly or installation of emergency driver.

**IMPORTANT:** An un-switched AC power source is required(100-347Vac).

**IMPORTANT:** Customers are advised to charge emergency LED driver 24 hours every 6 months during storage.

**CAUTION:** Make sure all electrical connections conform to the National Electrical Code and all applicable local regulations.

**CAUTION:** This is a sealed unit. Components are not replaceable. Replace the entire LED Emergency Backup unit when necessary.

**CAUTION:** Equipment should be mounted in locations and at heights where it is not be subjected to tampering by unauthorized personnel.

**CAUTION:** The use of accessory equipment is not recommended by the manufacturer and may cause an unsafe condition.

**CAUTION:** Use with grounded, UL Listed, dry or damp location rated fixtures. Case should also be grounded.

**CAUTION:** Battery is rechargeable Li-ion type and must be recycled or disposed of properly

**CAUTION:** Suitable for use in 5°C -50°C ambient temperatures

**CAUTION:** This product is for use in indoor fixtures only. Do NOT use near heated air handling outlets or hazardous locations..

Do not let power supply cords touch hot surfaces. Do not mount near gas or electric heaters. Do not use this equipment for other than its intended use. Failure to follow this may cause an unsafe condition and will void warranty. Servicing of this equipment should be performed by qualified personnel only.